



ELEVATION D

ABOUT THE LAUREL II

The Laurel plan makes a great first impression with its charming covered entry. The main floor offers open dining and great rooms and a well-appointed kitchen with an immense center island. Upstairs, discover a central laundry room, a versatile loft, two generous bedrooms with a shared bath and an elegant owner's suite boasting a private bath and expansive walk-in closet. Personalize this plan with center-meet doors at the dining room, a fourth bedroom in lieu of the loft, a deluxe owner's bath, a covered patio and more!

COMMUNITY LOCATION:

Portobello at Canyon Crest | 178 Stanley Cove | Mesquite, NV 89027 | 702.638.4440

DESIGN CENTER LOCATION:

Las Vegas Home Gallery™ | 7770 S. Dean Martin Drive, Suite 309 | Las Vegas, NV 89139 | 702.617.8400

*This information is presented for educational purposes only. The HERS® index for a confirmed rating will be determined by a third-party HERS rater based on data gathered from on-site observations and, if required, testing of rated features for a home as featured, optioned, located, oriented and/or built.

**Standard new home is based on the RESNET® Reference Home definition with a HERS index of 100 (based on the 2006 International Energy Conservation Code).

***Typical resale home is based on the U.S. Department of Energy definition with a HERS index of 130.

^RESNET has developed the HERS index to indicate the comparative efficiencies of homes. It is no guarantee that energy efficiencies will be achieved.

Floor plans and renderings are conceptual drawings and may vary from actual plans and homes as built. Options and features may not be available on all homes and are subject to change without notice. Actual homes may vary from photos and/or drawings which show upgraded landscaping and may not represent the lowest-priced homes in the community. Features may include optional upgrades and may not be available on all homes. Prices, specifications and availability are subject to change without notice. ©2021 Richmond American Homes. In Nevada, homes are offered by Richmond American Homes of Nevada, Inc. (Nevada Contractor License #0026417) 7/6/2021



ELEVATION A



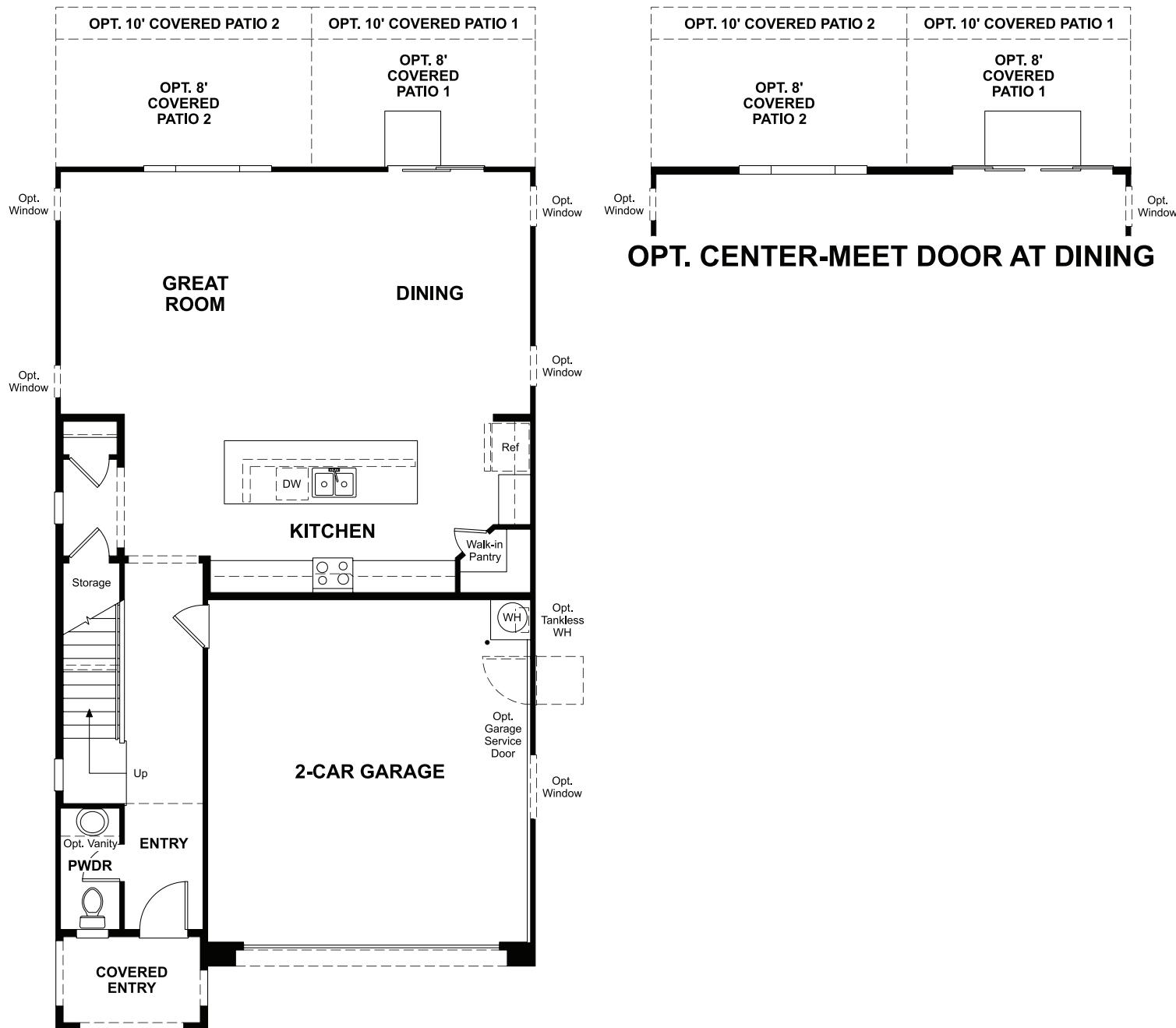
ELEVATION B



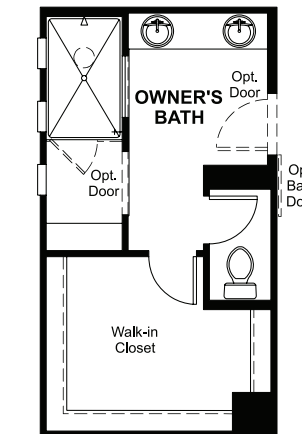
ELEVATION C

MAIN FLOOR

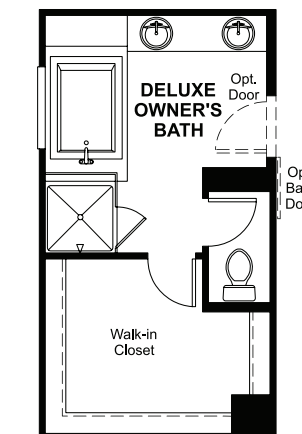
SECOND FLOOR



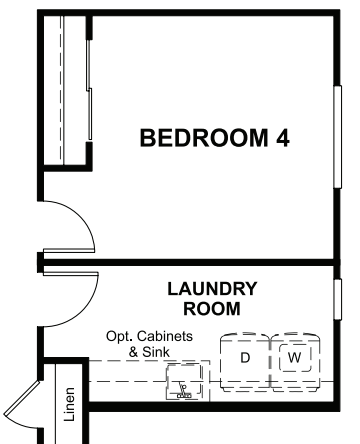
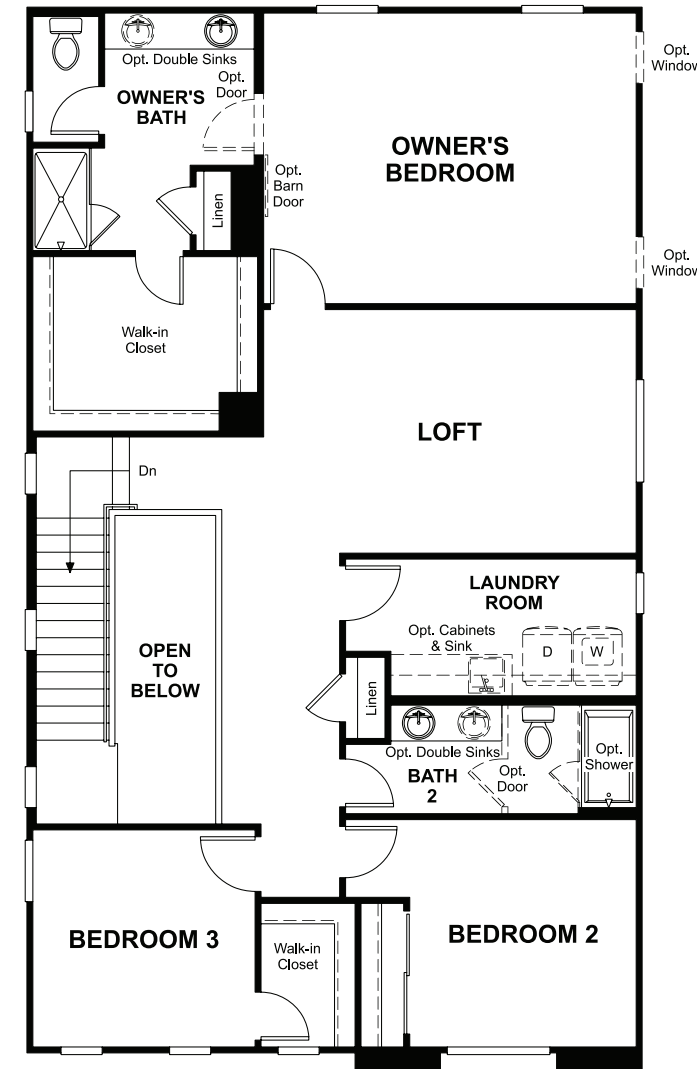
OPT. CENTER-MEET DOOR AT DINING



OPT. WALK-IN SHOWER OWNER'S BATH



OPT. DELUXE OWNER'S BATH



OPT. BEDROOM 4

THIS PLAN'S PROJECTED **HERS® INDEX = 59***
 Projected rating based on plans – field confirmation required

How does this floor plan rate?
 Take a look: **100** = standard new home™ **130** = typical resale home™
 The lower the number, the better! Refer to the RESNET® HERS index brochure or go to RESNET.us and HERSindex.com

What's a HERS® index? HERS stands for Home Energy Rating System, a system created by RESNET® to measure home energy efficiency. ^
 A projected HERS index or rating is a computer simulation performed prior to construction by a third-party HERS rater using RESNET-accredited rating software, rated feature and specification data derived from home plans, features and specifications, and other data selected or assumed by the rater. The projected HERS index is approximate and is subject to change without notice. Actual results will vary.