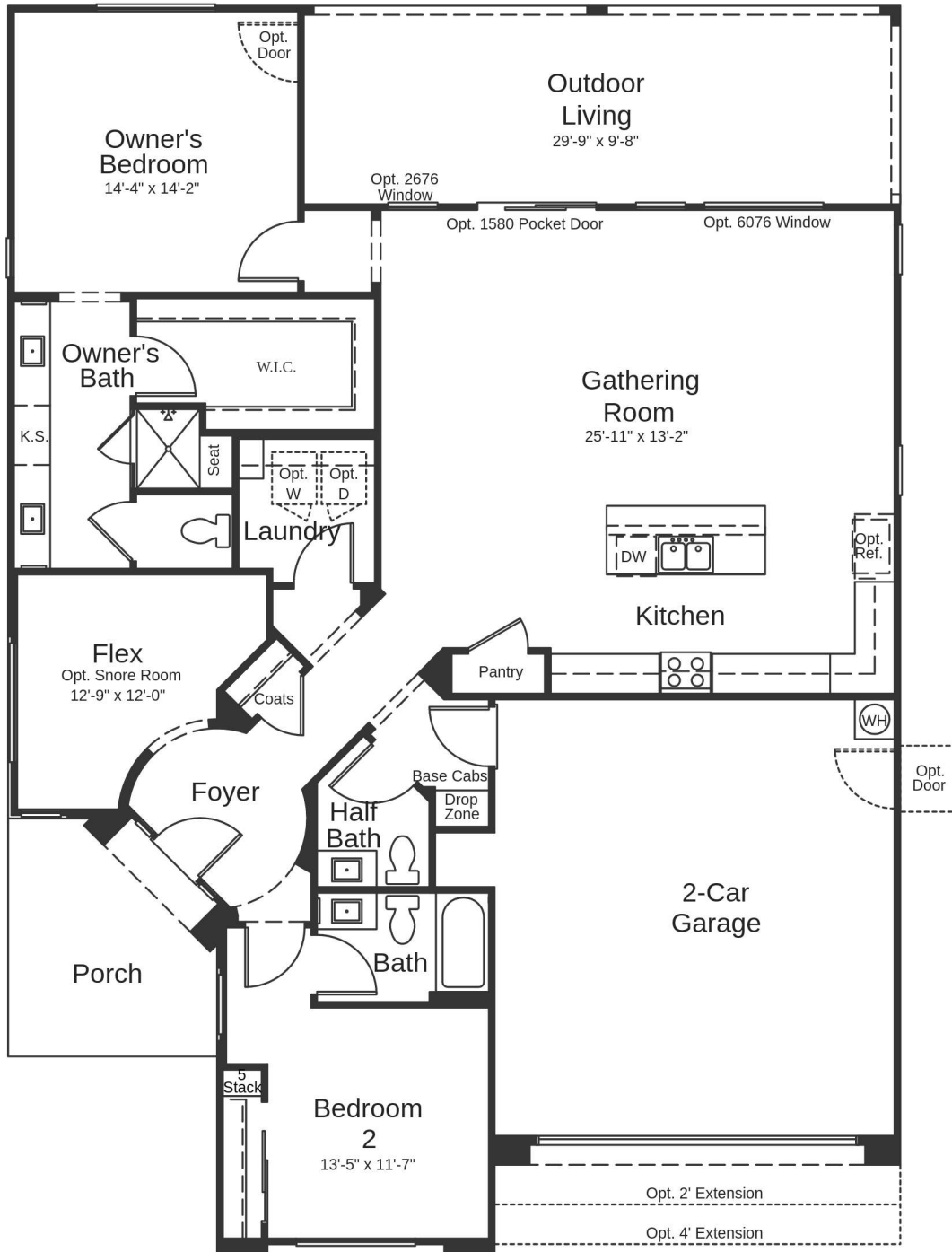


PLAN PLAN 3 - ONYX (1,721 SQ. FT. | 1 FLOORS | 2-3 BEDS | 2.5 BATH | 2-CAR GARAGE )



# Desert Modern

**PLAN** PLAN 3 - ONYX (1,721 SQ. FT. | 1 FLOORS | 2-3 BEDS | 2.5 BATH | 2-CAR GARAGE )



All information (including, but not limited to prices, views, availability, school assignments and ratings, incentives, floor plans, site plans, features, standards and options, assessments and fees, planned amenities, programs, conceptual artists' renderings and community development plans) is not guaranteed and remains subject to change or delay without notice. Prices may not include lot premiums, upgrades and options. Community Association fees may be required. Square footage and dimensions are estimated and may vary in actual construction. Community improvements, recreational features and amenities described are based upon current development plans which are subject to change and under no obligation to be completed. Actual position of house on lot will be determined by the site plan and plot plan. Floor plans are the property of Taylor Morrison, Inc. and its affiliates and are protected by U.S. copyright laws. For further information, please see a Taylor Morrison Community Sales Manager and review our Terms of Use. This is not an offering in any state where prohibited or otherwise restricted by law.