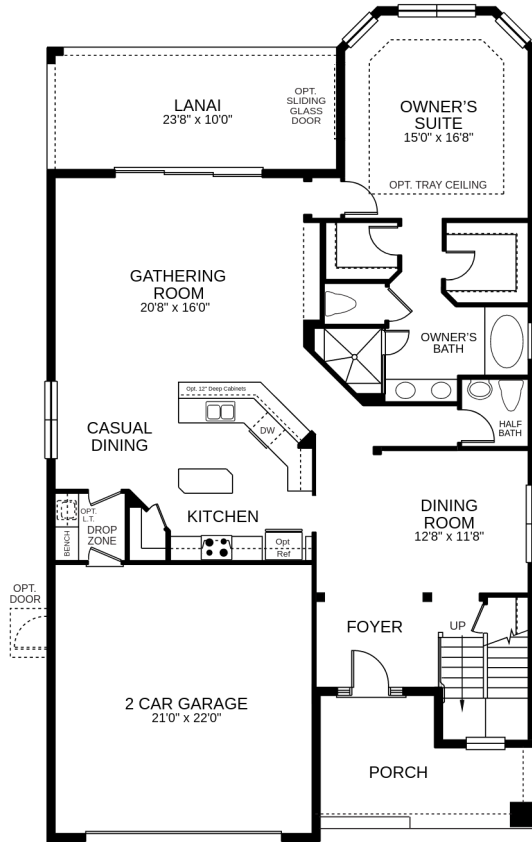


PLAN MARTINIQUE (2,872 SQ. FT. | 2 FLOORS | 4 BEDS | 3.5 BATH | 2-CAR GARAGE)



PLAN MARTINIQUE (2,872 SQ. FT. | 2 FLOORS | 4 BEDS | 3.5 BATH | 2-CAR GARAGE)



PLAN MARTINIQUE (2,872 SQ. FT. | 2 FLOORS | 4 BEDS | 3.5 BATH | 2-CAR GARAGE)



Included Elevation