

---

# Juniper

3651 Sq. Ft. • 4 Bedrooms • 3 Full Baths • 1 Half Bath • 3-Car Garage



Elevation C Craftsman



Welcome to Better

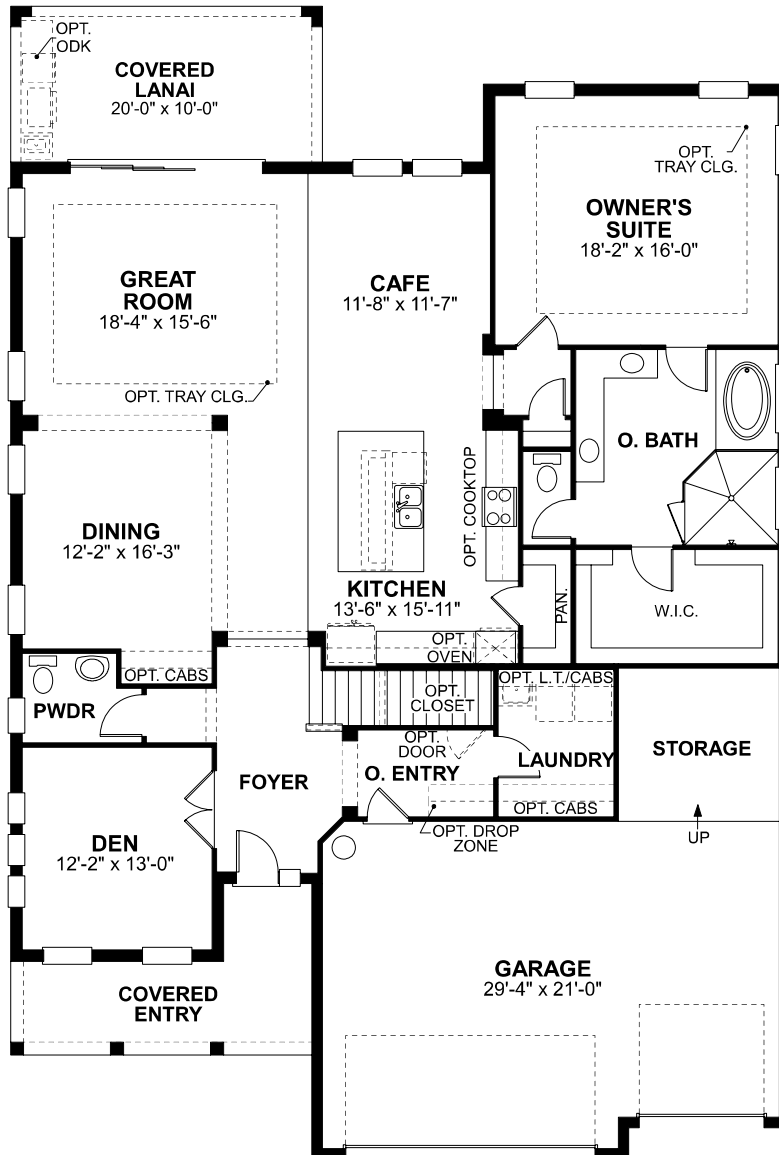
Because we are constantly improving our product, we reserve the right to revise, change, and/or substitute product features, dimensions, specifications, architectural details and designs without notice. This brochure is for illustration purposes only and is not part of a legal contract. Prices are subject to change without notice. Room dimensions are approximate and calculated from inside of partition. Printed August 20, 2021



# Juniper

3651 Sq. Ft. • 4 Bedrooms • 3 Full Baths • 1 Half Bath • 3-Car Garage

## First Floor



**M/I HOMES**

Welcome to Better

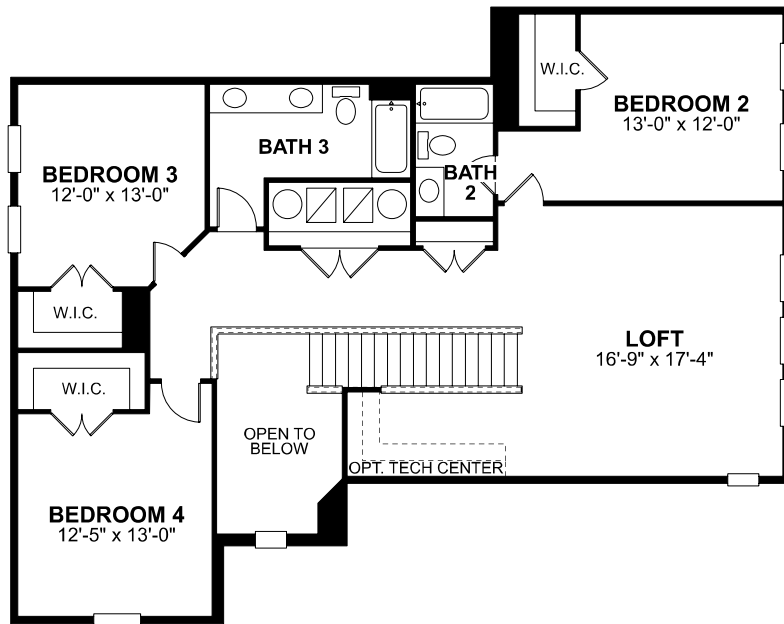
Because we are constantly improving our product, we reserve the right to revise, change, and/or substitute product features, dimensions, specifications, architectural details and designs without notice. This brochure is for illustration purposes only and is not part of a legal contract. Prices are subject to change without notice. Room dimensions are approximate and calculated from inside of partition. Printed August 20, 2021



# Juniper

3651 Sq. Ft. • 4 Bedrooms • 3 Full Baths • 1 Half Bath • 3-Car Garage

Second Floor



Welcome to Better

Because we are constantly improving our product, we reserve the right to revise, change, and/or substitute product features, dimensions, specifications, architectural details and designs without notice. This brochure is for illustration purposes only and is not part of a legal contract. Prices are subject to change without notice. Room dimensions are approximate and calculated from inside of partition. Printed August 20, 2021

