

# THE BLACKSTONE

2,708-3,121 Sq. Ft. | 4-5 Bedrooms | 2.5 Baths



 **Craftsman**




 **European Romantic**

The Blackstone is a spacious, functional two-story home, offering four bedrooms, two and a half bathrooms, and an abundance of living space. Enter through the two-story foyer to the kitchen, which opens to the great room and features an eat-in nook, walk-in pantry, and plenty of counter space. Off the garage is a mud room and walk-in closet, perfect for storing coats, boots, and backpacks. Upstairs, find three large secondary bedrooms — each with a walk-in closet — that share a full bath. The master suite is a private retreat for homeowners, with a large walk-in closet and private bath. A study, loft, and conveniently located second-floor laundry complete this desirable home.



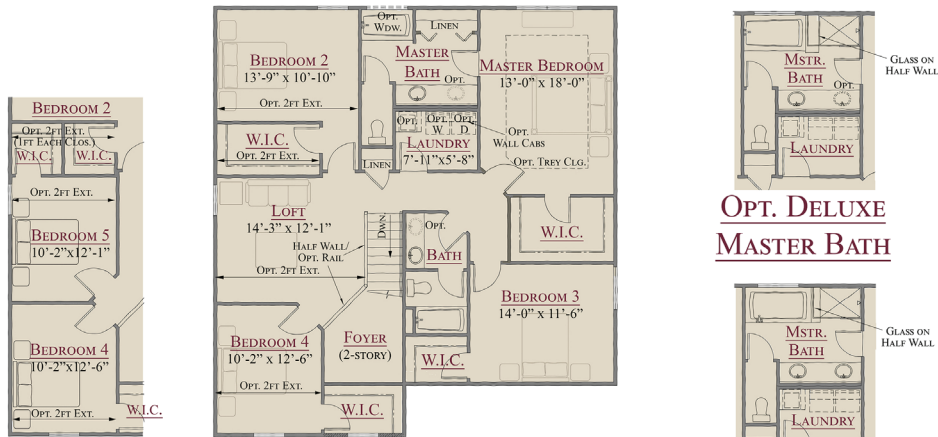
 **American Colonial**



 **American Traditional**

# THE BLACKSTONE

2,708-3,121 Sq. Ft. | 4-5 Bedrooms | 2.5 Baths

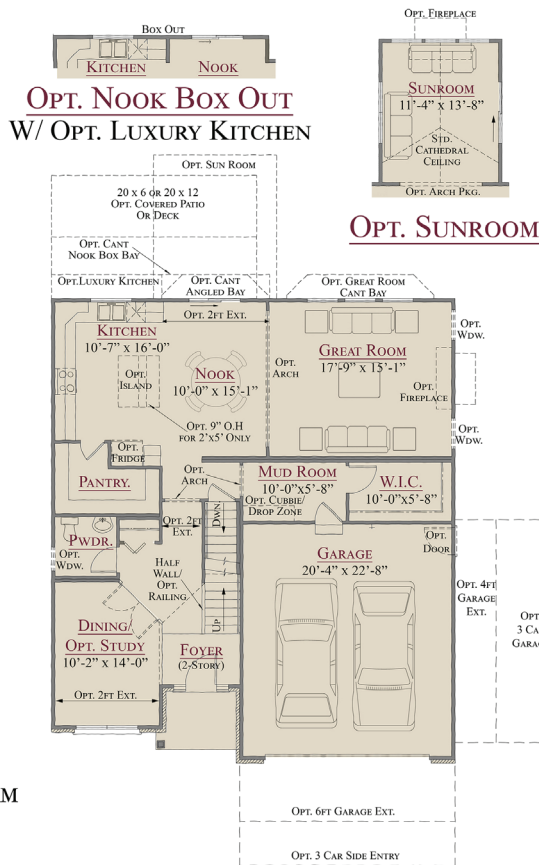


**SECOND FLOOR PLAN**

**OPT. BEDROOM 5**

**OPT. DELUXE MASTER BATH**

**OPT. LUXURY MASTER BATH**



**FIRST FLOOR PLAN**

**OPT. LUXURY KITCHEN**

**OPT. STUDY I/L/O DINING RM**

**OPT. OPEN STAIR TO BSMT**

**OPT. GUEST SUITE I/L/O DINING RM**

This depiction represents an artist's conception of the elevation and floor plan and is not intended to be an exact representation or show specific detailing. Plans remain subject to change without notice. Drawings are not to scale. All measurements shown are approximate and not necessarily to scale. Location, size and construction of doors, windows, wall, fireplaces and any other items depicted may vary depending on elevation preference or choice of options and are subject to change without notice. Some options and elevations shown may not be available in every neighborhood; see Sales Manager for details. Due to normal construction tolerances, the room sizes shown may vary slightly. The Builder may change home design, materials, features and methods of construction without prior notice. Model homes may contain some optional features not available through the Builder.