

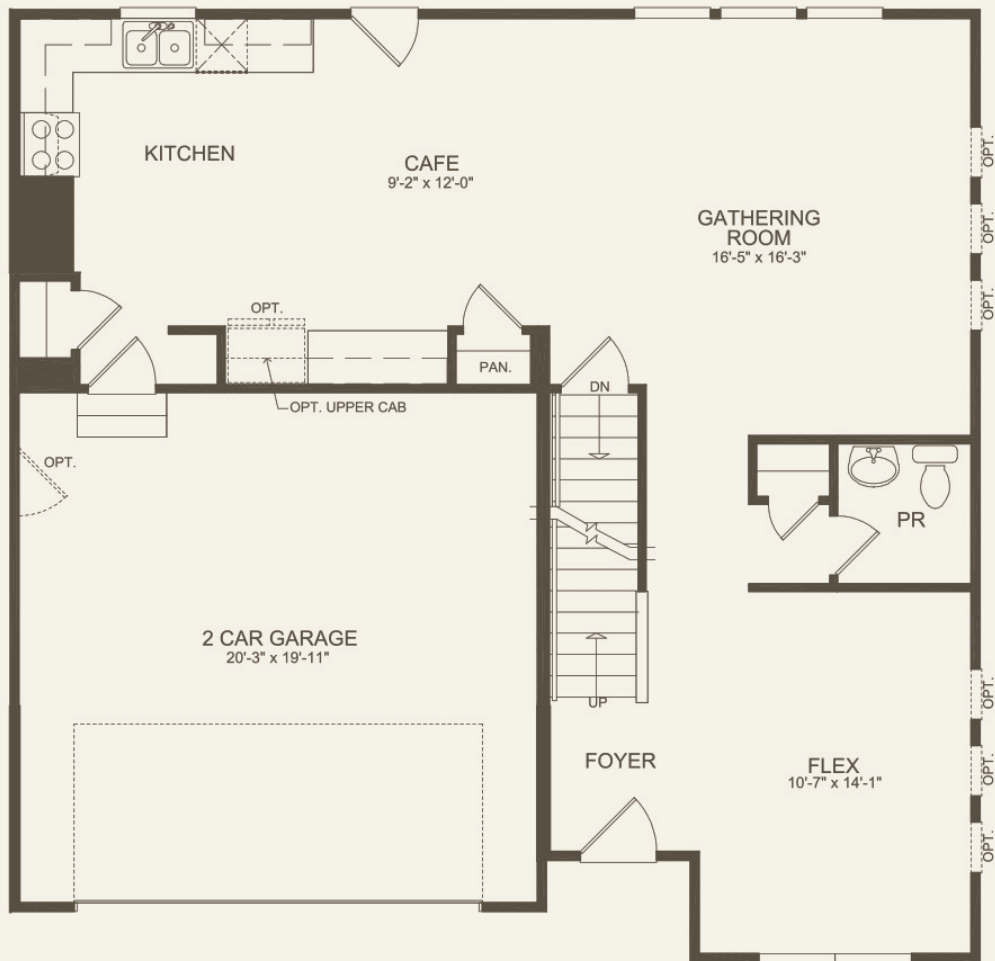
Dalton At Nankin Mills

On Joy Rd., east of Newburgh Rd., Westland, Michigan, 48185

Price Coming Soon

- 3-4 Bedrooms
- 2 Bathrooms
- 2056 Sq. Ft.

3 br / 2.5 ba - First Floor

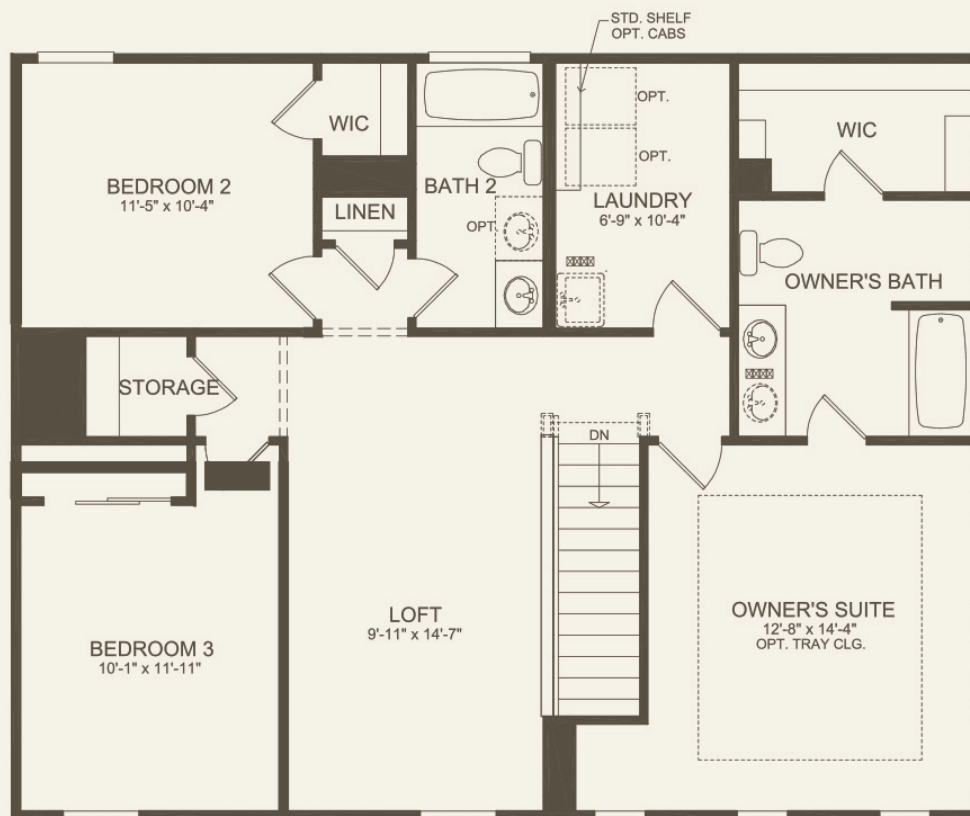


Use this as FPO Prices may not include lot premiums, upgrades and options. Community Association and golf fees may be required. Prices, promotions, incentives, features, options, amenities, floor plans, elevations, designs, materials, and dimensions are subject to change without notice. Square footage and dimensions are estimated and may vary in actual construction. Community improvements and recreational features and amenities described are based upon current development plans which are subject to change and which are under no obligation to be completed. Actual position of house on lot will be determined by the site plan and plot plan. Floor plans, interiors and elevations are artist's conception or model renderings

and are not intended to show specific detailing. Floor plans are the property of PulteGroup, Inc. and its affiliates and are protected by U.S. copyright laws. For further information, see our terms of use. This is not an offering to residents of NY, NJ, CA or CT or where otherwise prohibited by law. Pulte Home Corporation is a licensed California real estate broker (Lic. # 00876003).



3 br / 2.5 ba - Second Floor



Use this as FPO Prices may not include lot premiums, upgrades and options. Community Association and golf fees may be required. Prices, promotions, incentives, features, options, amenities, floor plans, elevations, designs, materials, and dimensions are subject to change without notice. Square footage and dimensions are estimated and may vary in actual construction. Community improvements and recreational features and amenities described are based upon current development plans which are subject to change and which are under no

obligation to be completed. Actual position of house on lot will be determined by the site plan and plot plan. Floor plans, interiors and elevations are artist's conception or model renderings and are not intended to show specific detailing. Floor plans are the property of PulteGroup, Inc. and its affiliates and are protected by U.S. copyright laws. For further information, see our terms of use. This is not an offering to residents of NY, NJ, CA or CT or where otherwise prohibited by law. Pulte Home Corporation is a licensed California real estate broker (Lic. # 00876003).

